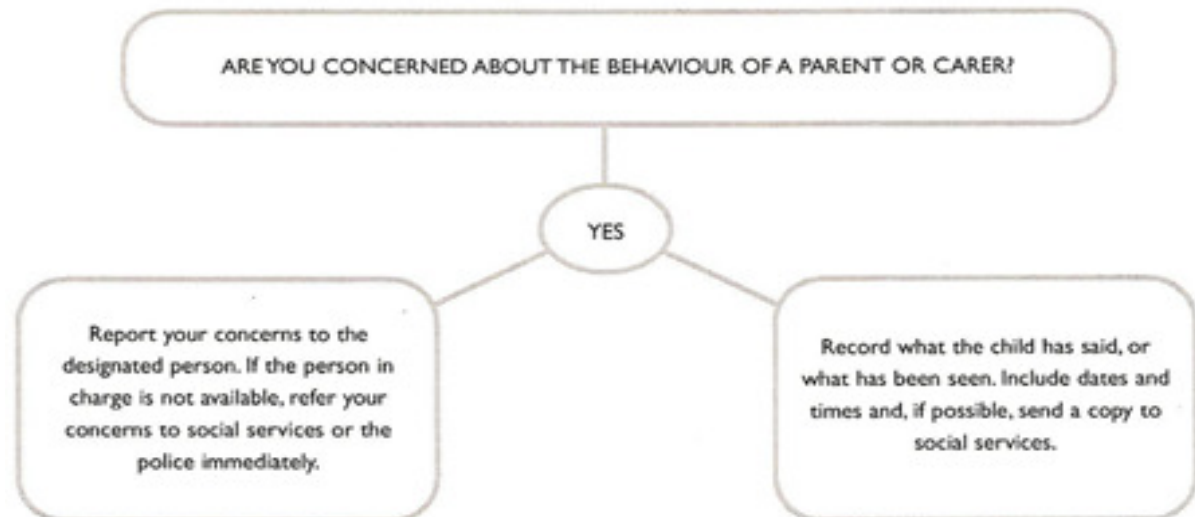


A Quick Guide to Procedures

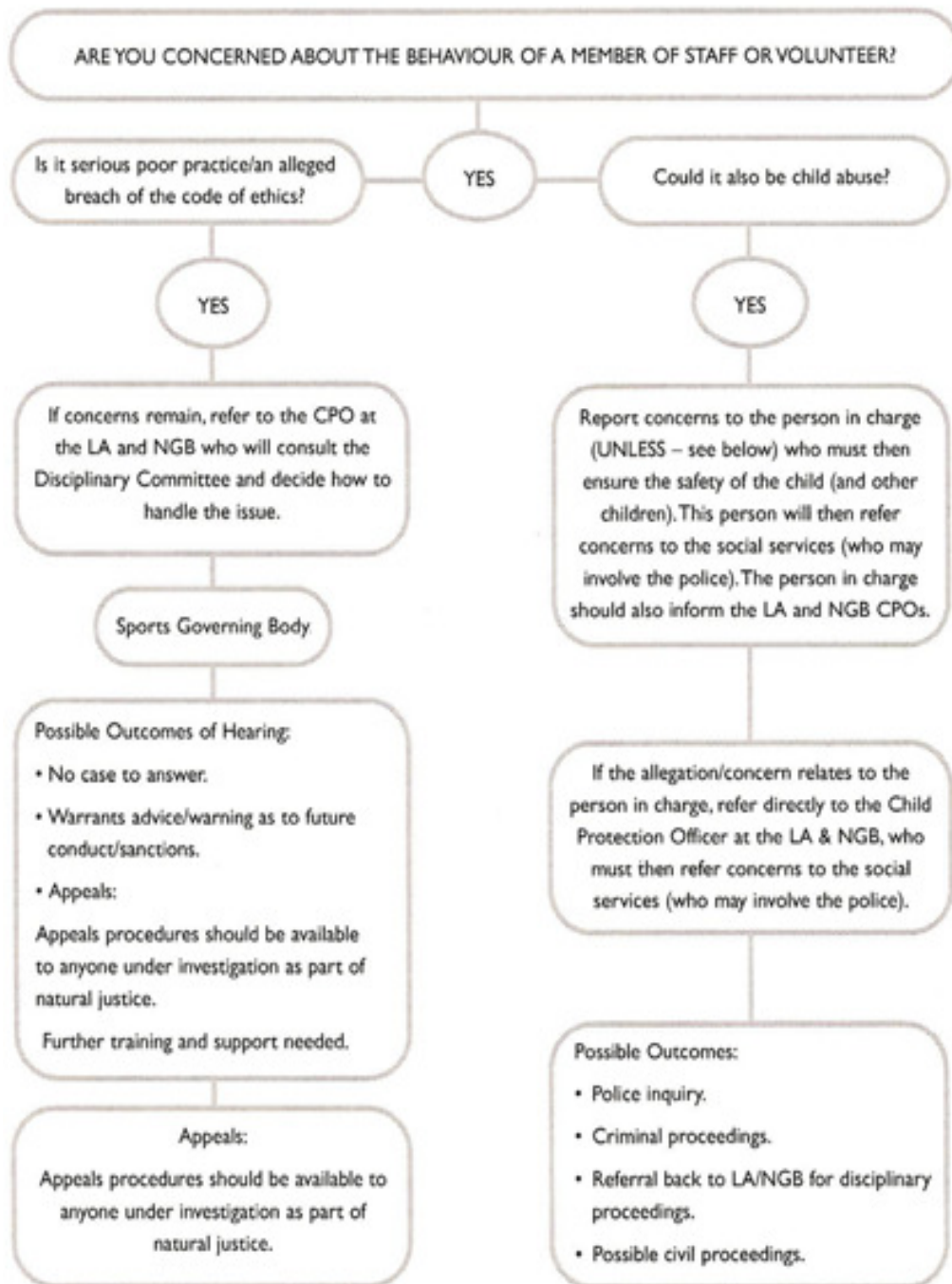
This guide is designed to inform the most appropriate action in relation to concerns about either a parent or carer (eg outside the immediate sporting environment).



Remember:

- Maintain confidentiality.
- Ensure the person in charge follows up with social services.
- **If the concerns are about someone who also plays a role within sport**, then the person in charge should inform the relevant sporting organisation's Child Protection Officer (CPO).

This guide is designed to inform the most appropriate action in relation to concerns about a member of staff or volunteer within sport.



If you do not know who to turn to for advice or are worried about sharing your concerns with a senior colleague, you should contact the social services direct (or the NSPCC on 0800-800 5000, or Childline on 0800-1111).